



# COIN COLLECTORS



## Peer Pressure

Peer pressure means doing the same thing that everyone else is doing.

There are good and bad types of peer pressure. We have lots of people in our lives that influence our choices.

Our parents decide what we get to do and participate in because we are too little to make those kinds of decisions yet. Which is a good thing! You get to be a kid and they get to be the grown up. Your parent or guardian make the best choices for you based on what you want and need.



Our friends can make good or bad choices. It's up to you to decide if you follow your friends or not. It's a good thing to follow them if they listen to their parents, teachers, and adults. But if they were going to jump off the really high playground equipment at the park, you might want to reconsider following them.

Sure, other kids have jumped off the equipment with no issues, but if you feel nervous about taking that leap, you should listen to that feeling. If you don't listen, you could hurt yourself.

Some peer pressure things aren't as dangerous as jumping off the high playground equipment. It could be small things like the clothes you wear. It's fun to dress alike but if you feel like you have to get new clothes all the time, it could mean you're falling into the peer pressure trap.



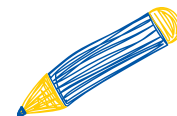
Our friends play a role in peer pressure too. They help us decide what we do because we like to hang out and play together.

Friendships are built by having something in common. If you like playing soccer or swimming, you meet other kids that do those same activities.



# Count the Objects

Instructions: **Count the objects and write the correct number in the box.**



Shoes:



Slide:



Shirts:



Shorts:

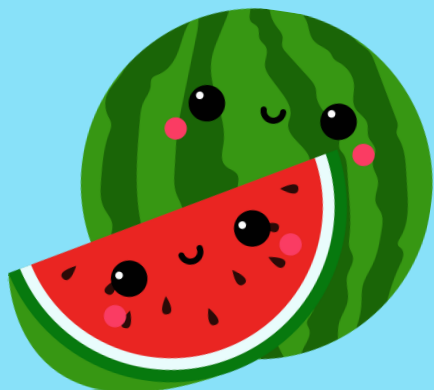


Stars:



## Joke of the Day!

Why did the melon jump into the lake?



Answer: It wanted to be a watermelon!

Bring this finished worksheet into the credit union for 1 Kid's Cash! When you collect 5 Kid's Cash you can pick a prize from our treasure chest. (ages 0 to 12)



**WELD COMMUNITY®**  
CREDIT UNION

Published by WCCU  
2555 47th Ave  
Greeley, CO 80634  
970-330-9728  
weldccu.com

Drive-Up: 7am to 5:30pm  
Lobby: 9am to 5:30pm  
Saturday Drive-Up: 9am to Noon

